

NEWSLETTER



CONTENT

- BB Spring 24 courses
- Upcoming Events
- Student Spotlight
- BB25 Continuing students

BEYOND BOUNDARIES COURSES SPRING 2024

Environmental Racism

Focuses on the impact of racism and structural policy disparities, analyzing public health data, policy options, and case studies to address environmental racism and improve population health in the St. Louis region and beyond.

Art of Medicine

Examines the influence of the arts on medical practice and perceptions of medical advancements through notable speakers, visual arts, and diverse perspectives.

To Sustainability and Beyond

Explores sustainability's environmental, social, and economic dimensions through readings, discussions, group work, and projects.

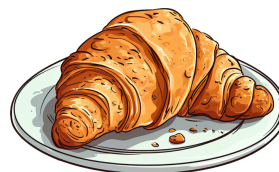
UPCOMING DECEMBER BB EVENTS

Steinberg Ice Rink Field Trip

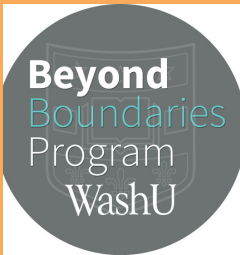


Saturday 12/2, from 1-3:30pm, Steinberg Ice Rink: Ice-Skating Field Trip (open to ALL BB students)

Birthdays, Bagels & Donuts Special Croissants Holiday Edition!



Friday 12/8 from 10am-2pm in BB office: Birthdays, Bagels & Donuts! (open to ALL BB students, and to celebrate the birthdays for each month)



STUDENT SPOTLIGHT

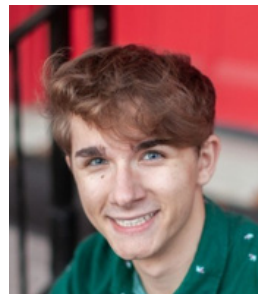
Kate Farmer BB 2025



Kate Farmer, a recipient of the Newman Scholarship, embarked on a transformative journey with a \$10,000 grant aimed at exploring the mental health landscapes across five impactful countries. This endeavor wasn't solely need-based but driven by a profound curiosity about global mental health. Her travels became a canvas to understand the intricate nuances of mental health, discovering how vastly different the world's approach to this crucial aspect is abroad. Kate delved into the social customs, daily routines, and dietary habits abroad, realizing how these factors intricately influence individuals' mental well-being and life balance. Witnessing firsthand how mental health policies interlace with governmental systems, especially in the realms of criminal justice, ignited her passion for effecting change within these systems. Kate, aspiring to attend law school with a background in philosophy and data science, aims to channel her insights into reforming care systems for the mentally ill within the legal framework. Her profound experiences overseas not only broadened her perspective but fueled her determination to enact impactful change within societal structures.

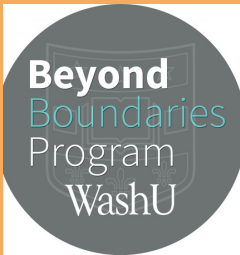


Mac Barnes BB 2026



Mac Barnes is a visionary artist navigating the complex terrain of emotional expression through the evocative medium of quilting. His creations, showcased in various exhibits, carry profound messages woven into fabric. The Gephardt exhibit, themed around the queer experience and joy, mirrors his endeavor to converse about LGBTQ+ progress and the present landscape. Barnes intricately merges the traditional practice of quilting with mathematical precision, using black and white to unravel intricate emotional narratives. His quilts, showcased at venues like the First Congressional Church Redgate Gallery, serve as conduits of hope, each stitch a testament to resilience. His upcoming showcase in South City promises an exploration of freedom through quilting, with four deeply personal works reflecting stories of diversity, resilience in the face of racism, and triumphs over natural disasters. Barnes' art transcends mere visuals; each fabric, each stitch, encapsulates profound tales, weaving comfort objects laden with emotional ties and resonating stories. Through his unconventional yet deeply impactful medium, Barnes challenges perceptions, inviting us to embrace quilting as a vessel to narrate compelling and vital stories. Barnes not only sells his emotional, quilted works but also dives into the innovative realm of textile experience and engineering, collaborating with companies like Midoc as a consultant, and utilizing his expertise in medical sensors and textile engineering. His involvement with Skandalaris as a summer fellow and WashU's venture analyst team exemplifies his commitment to merging computer science and art, advocating for the entrepreneurship of combining the two fields, encapsulating the essence of his belief in the convergence of textile art and technology through beyond boundaries creativity.



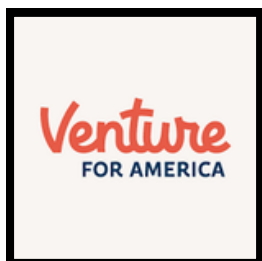


STUDENT SPOTLIGHT

Logan Rogge BB 2023



Logan Rogge is carving his path while already making strides in his field, currently engaged in the league with a focus on sewing electrode testing—a testament to his commitment to innovation and technological advancement. His summer internship at Midoc further honed his expertise, delving into the intricate world of design. A spring 2024 graduate in electrical engineering, Logan's academic pursuits encompass a minor in entrepreneurship, showcasing his multifaceted approach to learning. As a member of the inaugural class of Beyond Boundaries, he stands at the forefront of interdisciplinary education, blending diverse fields to amplify his skill set. His involvement with Venture for America, a prestigious fellowship program, indicates his dedication to matching his talents with startups in emerging cities post-graduation, a testament to his commitment to both innovation and economic growth. Logan's journey exemplifies a blend of academic rigor, hands-on experience, and a keen eye for the future of technology and entrepreneurship.

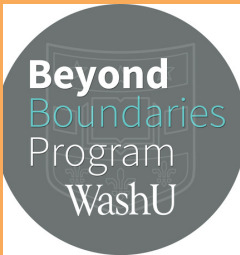


Jennifer Alexander BB 2027



Jennifer Alexander, a freshman specializing in communication design, surged into the Skandalaris Venture Capitalist Competition with her brainchild, Great Axis. This innovative platform aimed at fostering cross-cultural understanding by bridging travel limitations and the hunger for diverse experiences showcased her visionary approach. As the founder of this groundbreaking idea, Jennifer navigated a journey of ideation, sharing her vision with professors at Endgame of Entrepreneurship. Her initiation into the SVC realm was uncharted territory; initially unfamiliar with the competition's dynamics, she advanced to the semifinals, despite her unfamiliarity with the venture capital landscape. Juggling deadlines and mastering the intricacies of her pitch proved challenging, yet engaging with judges provided invaluable insights, igniting a drive to assimilate more knowledge. Jennifer's experience as a semifinalist, though arduous, served as a pivotal learning curve, laying the foundation for future strides in entrepreneurial endeavors. She is looking for teammates who are experienced in technology development, marketing, content creation, and cultural studies.

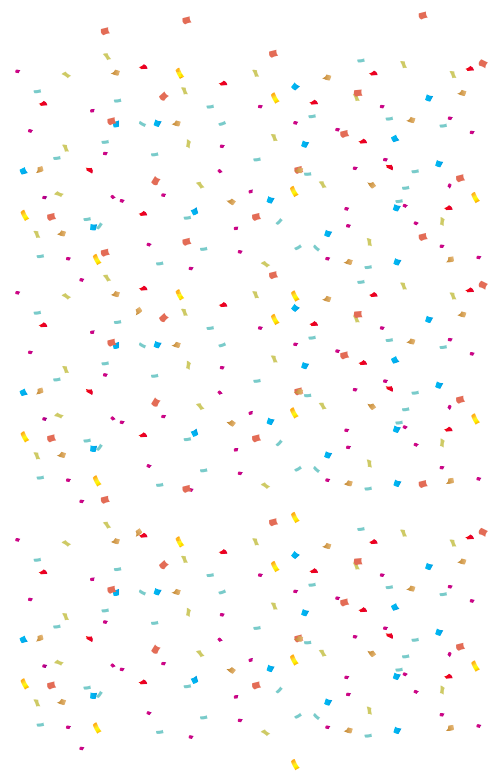




CONTINUING BB25 STUDENTS

We are thrilled to share that the following students will be continuing with the Beyond Boundaries Program for their 3rd and 4th years at WashU!

- Mariah Carter**
- Marceline Chiwengo**
- Annabella Clyne**
- Siobhan Davenport**
- Leandro de Armas**
- Clara Dutton**
- Logan Flori**
- Lauren Fulghum**
- Chandler Gartner**
- Ella Hyman**
- Anjali Kunavarapu**
- Griffin Lovato**
- Pedro Morales**
- Omeed Moshirfar**
- Adejola Ogunsan**
- Joaquin Otero**
- Neil Panwalker**
- Bianca Rodriguez Pagano**
- Tegan Thomas**
- Laura Vega Perdomo**
- Clarissa Worthington**
- Jonah Zacks**



In response to student feedback this past year, this cohort will experience some exciting new changes to the program including but not limited to engaging fall and spring workshops, additional social/community building programming throughout the school year, and a new system for connecting extracurricular activities to program requirements.

At a recent BB25 cohort breakfast, we enjoyed speaking with the students about their experiences and hearing some additional suggestions for the program.

We are looking forward to staying connected with these students and following their unique interdisciplinary journeys!

Connect with us!

Email: beyondboundaries@wusl.edu

314-935-8874

